

Infortrend subsystems that were manufactured and shipped before the release of SANWatch will not have a SANWatch *Trial* license key pre-installed, while subsystems that were manufactured and shipped after the release of SANWatch will have a Trial license key pre-installed.

The process for acquiring and applying a *Trial* license key file is the same as for the *Express* and *Professional* license keys, but is available at no cost and has the same functionality as the *Professional* version. It is good for 30 days.

Begin by installing SANWatch on a host system, and then start it by using the desktop icon or the menu item.

After SANWatch starts, the **Connection** dialog will appear. Enter the *IP Address* of your subsystem in the first field, and select the *Username* 'Configuration' from the dropdown.

There is no *Password* by default on a new subsystem.

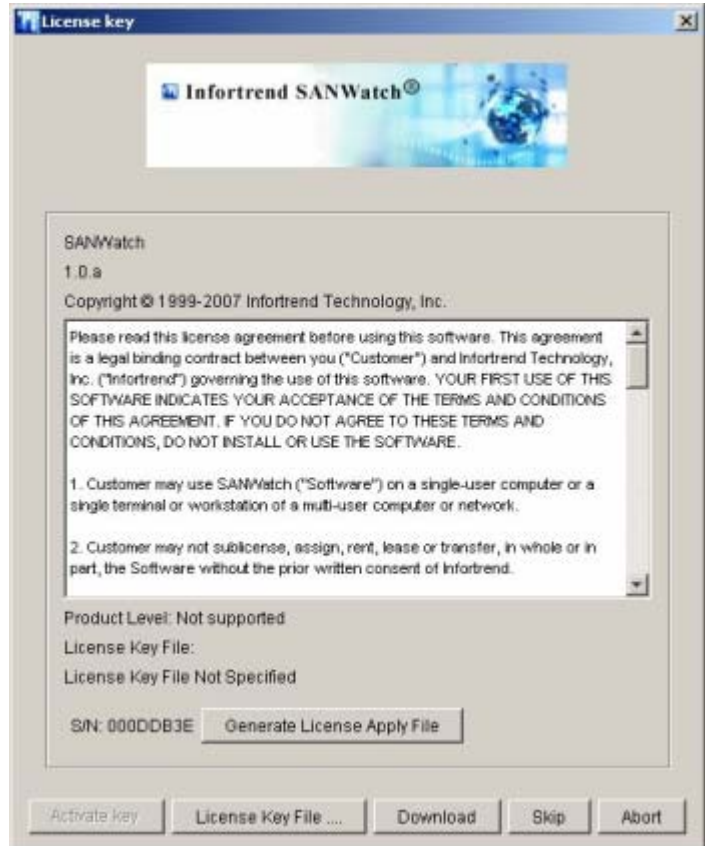
Click the *OK* button.



After successfully connecting to the subsystem, the **License Key** dialog will appear.

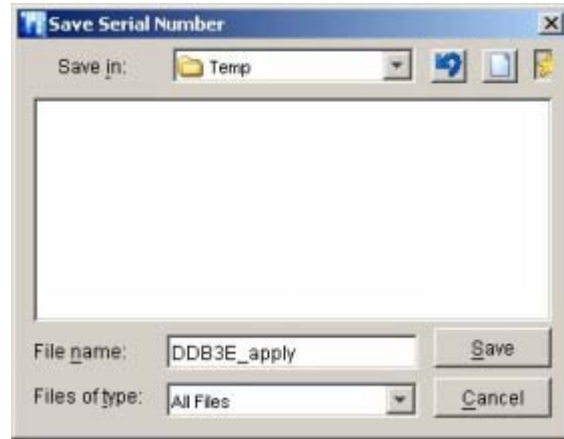
Note that at this point there is no *License Key File* indicated.

To begin the license key application process, click the *Generate License Apply File* button.



The **Save Serial Number** dialog will appear, and you will be prompted for a *File Name* and a location to save it.

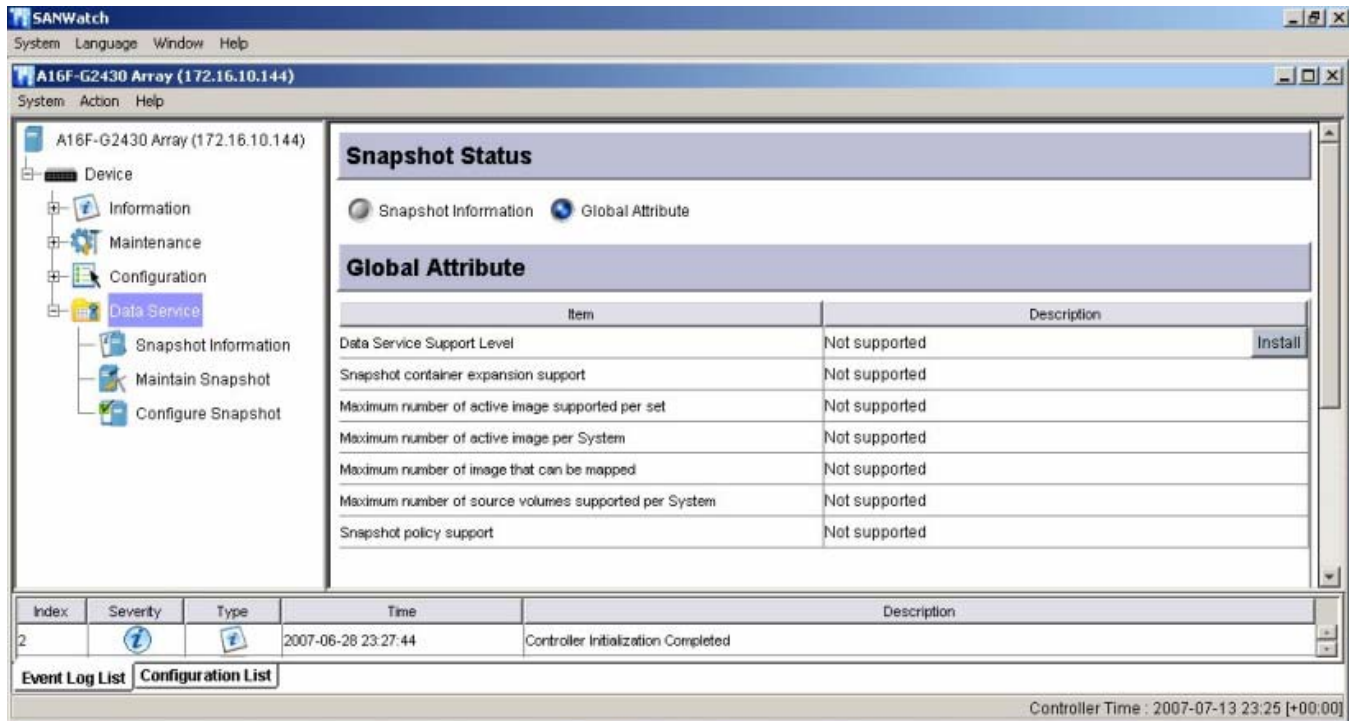
Click the *Save* button to complete this step.



You will be notified of the successful saving of the file...



The management interface for your subsystem will appear next. Click on the *Data Services* section and then click on the *Global Attribute* button under the Snapshot Status heading. Note that at this point all of the Attributes are 'Not supported'.

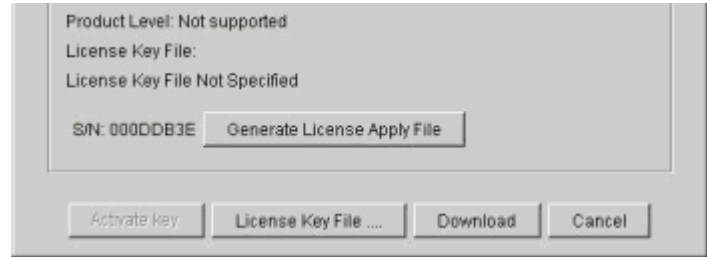


You should contact your Infortrend reseller, who will need this 'License Apply File' to process your license key file request.

When you receive your license key file, save it on your server.

On the 'Global Attribute' page, click the *Install* button.

The **License Key** dialog will appear again. Click the *License Key File...* button to specify the location and name of your license key file.



From the **License Key** file prompt, select the saved license key file and click the *Open* button.



The **License Key** dialog will now show the License Key File Name as the file you just selected.



Note that the *Activate key* button is not enabled.

Click *Download* button.

You will be notified when the license file key file is successfully loaded.



The *Activate key* button should now be enabled. Click it and you will be notified of the successful activation of the License.



To complete the activation process, the RAID controller will perform a restart operation. When the re-start has completed, you can re-connect to the subsystem in SANWatch.

Click on the *Data Services* section and then click on the *Global Attribute* button under the Snapshot Status heading.

The Attributes should now reflect the License Support Level you have purchased.

Global Attribute	
Item	Description
Data Service Support Level	Express <span style="float: right;">Install</span>
Snapshot container expansion support	Yes
Maximum number of active image supported per set	8
Maximum number of active image per System	32
Maximum number of image that can be mapped	4
Maximum number of source volumes supported per System	4
Snapshot policy support	No

The Data Service feature is now activated, allowing you to use the Snapshot functions.