

OVERVIEW

SANWatch is Infortrend's latest storage management platform featuring the following function groups:

- **Centralized Management:**
Full-featured monitoring of multiple arrays locally or remotely over LAN/WAN.
- **Storage Management:**
Comprehensive and complete RAID configuration functions.
- **Data Service:**
Snapshot is the first consolidation feature that will be followed by more functionality such as Volume Copy, Remote Replication, etc.

NEW FEATURES

- Point-in-time snapshot images using space-efficient copy-on-write methodology
- Snapshot operation processed by storage hardware, off-loaded from host CPUs
- Non-disruptive backup and recovery
- Flush agents for Windows platforms
- Automated snapshot task scheduler
- Automated snapshot prune for recycling storage space either by the maximum number or the life span of images

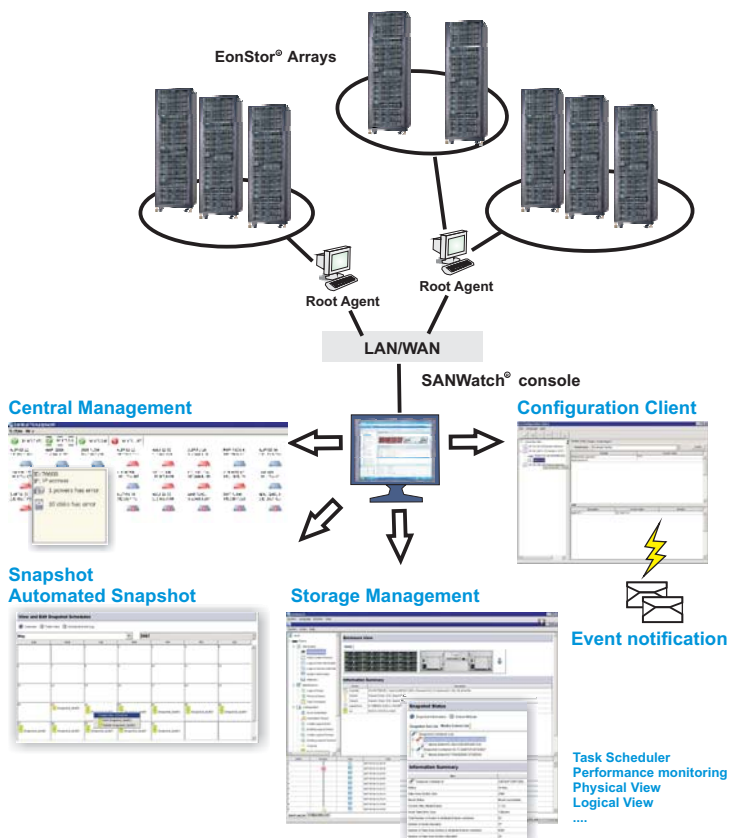
TECHNICAL BRIEF

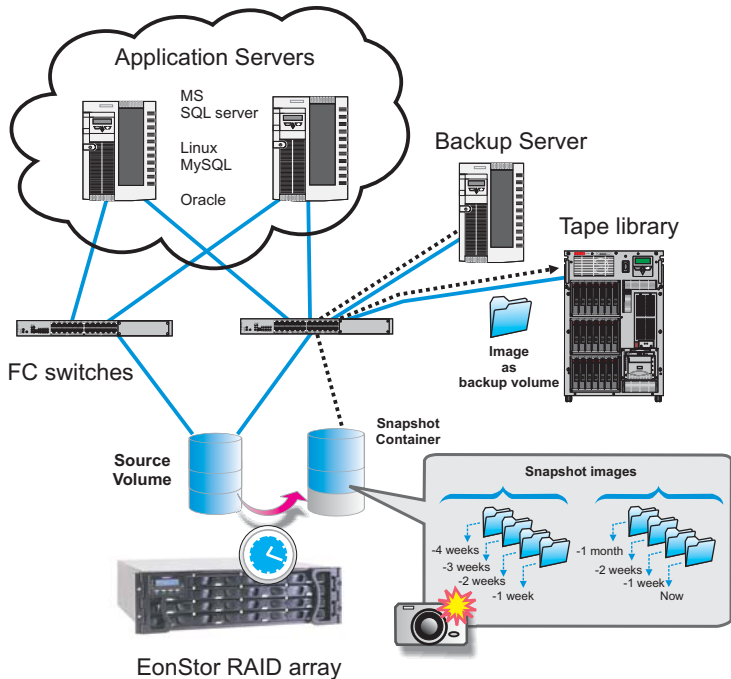
SANWatch provides a feature-rich, yet easy to approach, Java-based GUI for Infortrend's EonStor series products. SANWatch includes the advanced data protection Snapshot in addition to all necessary storage administration functionality such as RAID configuration, maintenance, and monitoring - all seamlessly integrated into a platform run across any distance over the network.

Infortrend implements multi-layer snapshot tables for maximum storage efficiency. Snapshot variables and differential images are managed as independent storage volumes that look and behave like complete backups. Snapshot volumes are mounted as real LUNs when data retrieval takes place allowing concurrent access to the regular or snapshot volumes.

Snapshot imposes minimum impact on host performance and storage space. With native hardware support, schedules can be arranged to perform automated backup and system will maintain a configurable number of snapshots.

Either RAID or Snapshot volumes can be dynamically expanded and there can be numerous snapshot images referring to multiple source volumes.





Storage Management Supported Platforms

- Microsoft Windows XP/2003 (32/64)/2003 R2 (32/64)/Vista
- RedHat Enterprise Linux AS 3.0/ES4.0 (32/64)
- SUSE Linux Professional 9.1, Enterprise Server 9 (64/10) (32/64)
- Fedora Linux 3 (64), Fedora Linux 5 (32/64)
- Sun Solaris 8/9/10 Sparc
- Mac OSX 10.4.x

Snapshot Versions

- **Express Version:**
Manual snapshot
- **Professional Version:**
Advanced features including snapshot scheduler, and automated space management

Snapshot Supported Platforms

- Windows Server 2003 R2 SP2 32-bit
- Windows Server 2003 SP2 64-bit
- Linux, Solaris **

Applicable EonStor Models

- Selected ASIC400 series

Snapshot Versions & Specifications

Specifications		Express	Professional
Capacity	No. of source volumes	4	Per system's LD limitation
	Snapshots per volume	8	128
	Max. no. of snapshots per system	32	1024 (depends on cache memory and storage capacity)
Online snapshot image mapping		4	128
Snapshot scheduler		No	Yes
Automated snapshot prune		No	Yes
Read-only access		Yes	Yes
Database agent support		No	Yes *
OS Flush agent		Windows Server 2003 **	

* Available with coming releases

** Snapshot on Linux, and Solaris with coming releases