

# Adjile Systems presents the New iSCSI to SAS/SATA RAID Solutions With JBOD Expansion



- [Datasheet](#)



Shown ESS16E-R1130



**S16E-R1130**  
**S16E-G1130**

The S16E leverages the performance edges by the 5th generation ASIC400 RAID architecture, RAID6 protection, ease of management by the latest SANWatch revision, and data service features such as snapshot and EonPath multi-pathing for optimal level of fault tolerance.

With exceptional flexibility in cabling and configuration for an IP SAN, the S16E marks an equilibrium between economics and vigorous features.

---

## **EonStor S16E-G1130**

Mixing SAS or SATA drives within an enclosure or across enclosures is supported.

Administrators can select an optimal deployment of drives depending on I/O intensity, data life-cycling, or cost-per-GB concerns.

In order to avail S16E for servers across the network, various network security/discovery protocols (such as CHAP, iSNS, or SLP) are implemented with the flexibility of up to 16 RAID 0/1/3/5/6 logical drives and 64 RAID partitions.

### **Full-featured RAID for IP SAN:**

The S16E-G1130 RAID enclosure is designed with:

- Four (4) GbE iSCSI ports,
- Configuration flexibility - multiple connections per TCP session,
- Infotrend's well-acclaimed data protection,
- High availability hardware,
- Drive connectivity to SAS or SATA-II disk drives,
- Multi-lane SAS links to expansion enclosures, (total capacity can reach 80TB).

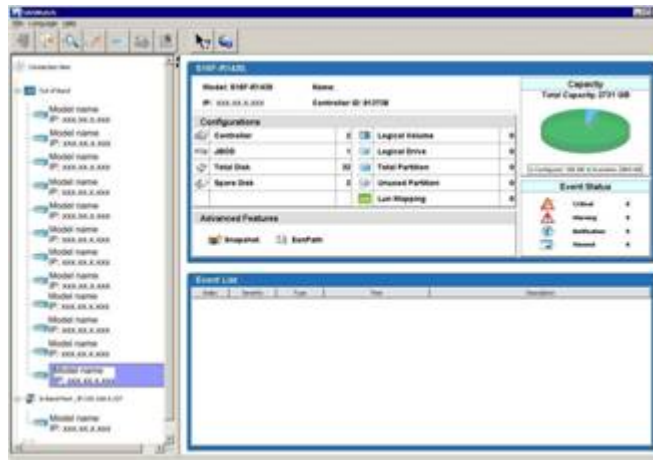
---

### **Software Features:**

**EonPath** – The EonPath drivers coordinates with Microsoft MPIO, runs on Solaris and Linux platforms, provides fault tolerance for multiple data paths and load-balancing algorithms. The EonPath also enables access through an alternate path in the event of single cabling failure.

**Snapshot** – Snapshot enables point-in-time backup with high fidelity and minimal impact to ongoing applications. More significant is that the snapshot operation is processed by RAID hardware without load on host CPUs. Infotrend's Snapshot is also unique in its use of dedicated volumes, automated snapshot scheduler, and comprehensive space usage control.

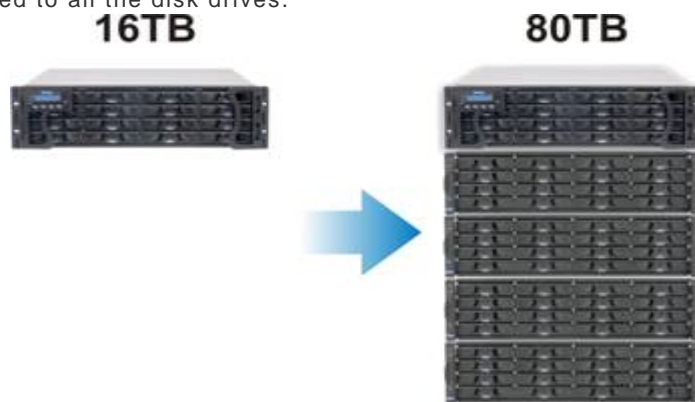
**SANWatch** - SANWatch provides all functions necessary to discover, configure, administer, and monitor Infortrend's RAID arrays; be they remote or many. The SANWatch also provides management interfaces for EonPath and Snapshot functions, so that all data protection and high availability features can be accessed through one interface.



**Scalability: Expansion over SAS Wide Links:**

Similar to Fibre Channel expansion loops, SAS expander technologies also enable the ease of connections when the need arises for more capacity. All you have to do is to attach the cables and use a flatblade screwdriver to select an enclosure ID by a rotary switch. The SAS WWN addresses will be automatically applied to all the disk drives.

A single-controller S16E-G1130 RAID can attach to 4 expansion enclosures (64 HDD) via SAS wide links.



**Wider Links per Session (Multiple Connections per TCP Session):**

2, 3, or 4 GbE links can be grouped into a TCP session so that bandwidth can be expanded for a server demanding higher throughput. This feature is available through firmware utility or GUI.



**Hard Drive Choices with Either SAS or SATA:**

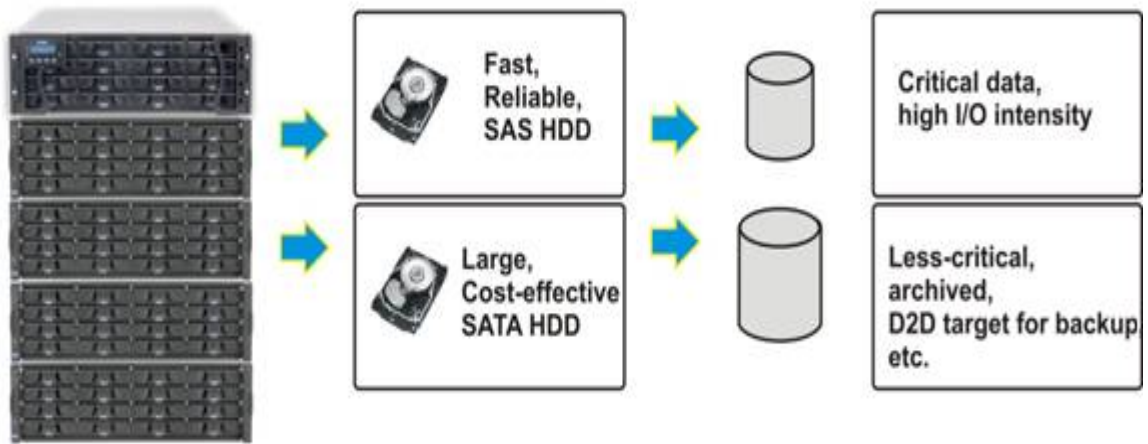
Via SAS multi-lane links over multiple enclosures, the large capacity SATA-II disk drives can be easily implemented for configurations that run on reliable SAS drives and a bulky pool of storage pool made of SATA-II disk drives.

Higher-RPM and reliable SAS drives can be used for critical and I/O-intensive access, while the large SATA drives can be used for less-critical data, archive, or D2D backup purposes.

SAS: 15,000 RPM available in 146GB or 300GB

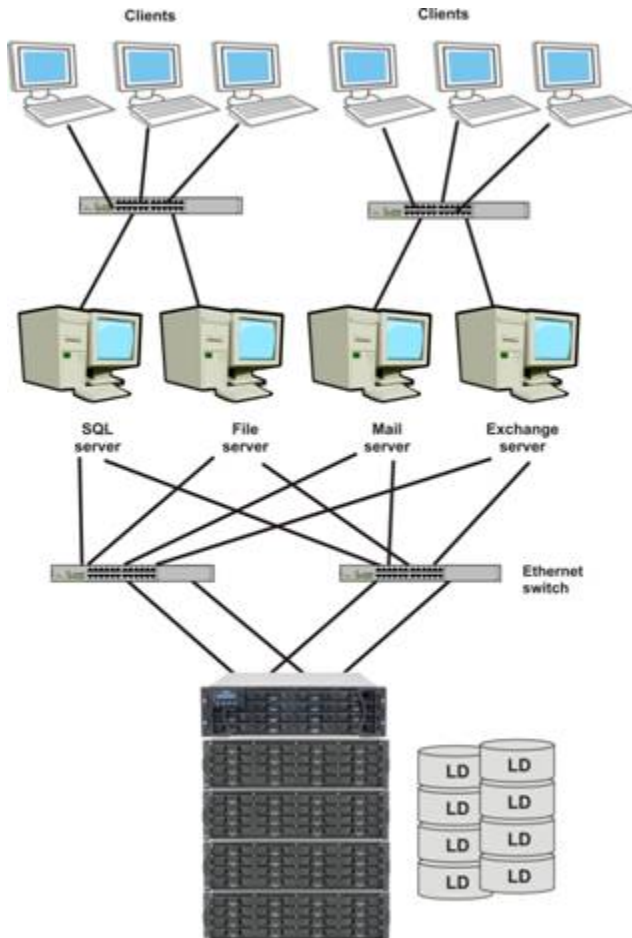
SATA: 7,200 RPM available in 500GB or 1TB

## Flexible SAS or SATA Deployment!



### 1. Data Consolidation

iSCSI RAID perfectly matches small to medium businesses for needs for storage consolidation. The benefits can be:



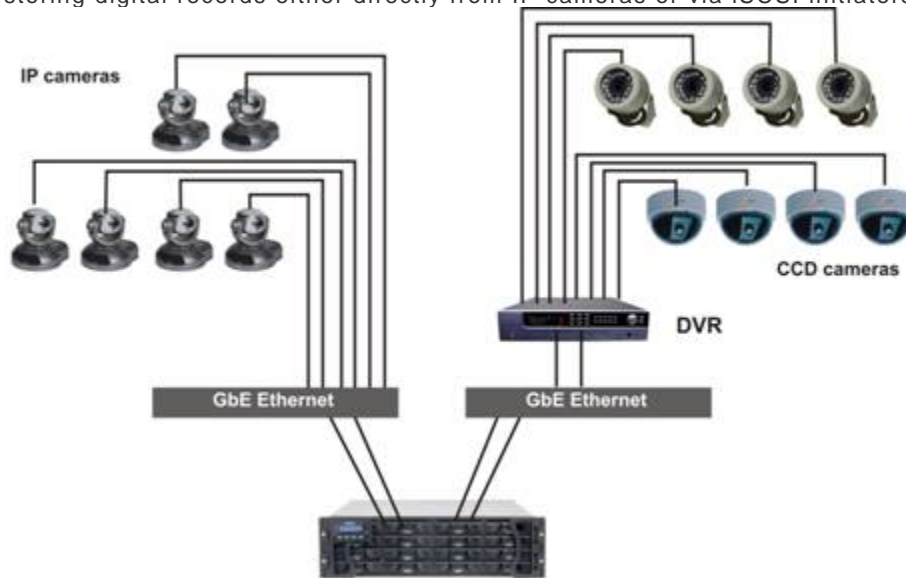
Cost is reduced to a level far lower than DAS or SAN.

- Efficient disk space utilization.
  - Easier to plan and manage.
- Continuous support for growing needs: up to 128 logical drives, 64 partitions per logical drive, and 1024 LUNs (>1GB controller cache), administrators can allocate storage space for heterogeneous servers/users.
- One-to-many management of iSCSI arrays using the SANWatch manager, with an instant view of multiple RAID systems and on-the-fly event notices.

---

## Surveillance

A security surveillance network is easily deployed with an abundance of storage space for storing digital records either directly from IP cameras or via iSCSI initiators from DVR stations.



**ESS16E-R1130**



**ESS16E-G1130**

For more information please contact one of the Engineers from Adjile Systems.

**Adjile Systems Inc.**

Sacramento, CA 95838

800-347-7621 Toll Free US

916-928-2590 Phone

Copyright © 2008 Infortrend Technology, Inc. All rights reserved. Product features and specifications are subject to change without notice. Infortrend assumes no liability whatsoever, and Infortrend disclaims any express or implied warranty, related to sale and/or use of Infortrend products including liability or warranties relating to fitness for a particular purpose, merchantability, or infringement of any patent, copyright or other intellectual property rights.