



# SATABeast® Xi

High Density, Energy Efficient Storage for Apple® Xserve® and Mac Pro Systems

## HIGHLIGHTS

- Enterprise class storage array built around the latest high-capacity SATA disk drives
- Energy and cost savings through AutoMAID™ technology
- OS independent. No special software or management applications required.
- High performance - over 800 MB/s sustained throughput
- Online SATABeast delivers access to data up to 500 times faster than tape libraries and 20x faster than other MAID systems
- Every component is redundant with individual components online hot swappable
- WorldView™ - Provides ability to manage and configure multiple units from a single GUI
- High IOPS performance — all 42 drives can be active simultaneously
- Anti-Accumulative Rotational Vibration design enables maximum drive reliability

## ABOUT SATABEAST XI

SATABeast® Xi is the first, high density, energy efficient storage solution built for the Xserve and Mac Pro markets delivering 42 drives and dual RAID controllers in only 4U of rack space. SATABeast Xi complements Xserve and Mac Pro environments in physical look and feel including a GUI that is visually compatible with Leopard. While optimized for Apple environments, SATABeast Xi can be used as a storage solution in mixed environments with equal ease. SATABeast Xi is flexible, scalable and completely OS independent to easily support a broad range of computing infrastructures.

Based on the proven technology of Nexsan's award-winning SATABeast, the SATABeast Xi provides the Apple market with a high density, plug and play solution that is complementary to Xserve's existing storage options. SATABeast Xi delivers high end performance at the same exceptional price point as current SATABeast solutions including the energy efficiency features and software licenses to allow SATABeast Xi to operate out of the box without expensive add-ons.

## UNPRECEDENTED ENERGY SAVINGS

Nexsan delivers high performance, high capacity RAID storage system with the energy saving benefits of AutoMAID (Massive Array of Idle Disks) technology. AutoMAID allows SATABeast Xi to place its disk drives in an idle state to conserve energy yet provide near-instantaneous access to data. AutoMAID is granular to the individual drive level and enables users to determine the level of energy savings desired. This breaks new ground in the Xserve market where no other energy efficient storage solution of this caliber exists.



# SATABEAST® Xi

## UNLEASH THE BEAST

For all your storage requirements including:

**Primary Storage.** SATABeast Xi is designed for primary storage of large data set applications like uncompressed, real-time HDTV as well as multi-stream and analog TV signals and high quality video editing with no frame drops. SATABeast Xi excels in cluster computing and enterprise environments where reliability and performance are an absolute. With blazing wire-speed read/write throughput and high IOPS performance, the SATABeast Xi is a perfect choice for compute-intensive applications.

**Secondary Storage and Disk-to-Disk (D2D) Backup.** SATABeast Xi is ideal for addressing secondary storage applications and disk-to-disk backup in which online access to data delivers superior business continuity and data protection as well as instant access to large volumes of data.

## HIGH PERFORMANCE ACROSS BOTH FIBRE CHANNEL AND ISCSI

The SATABeast Xi has active/active RAID controllers each delivering dual function Fibre Channel and iSCSI connectivity at wire speed performance. SATABeast Xi has 4 gigabit Fibre Channel interface ports for connecting directly to your Xserve or Mac Pro systems, and is optimized to be compatible with Apple's Xsan storage network software. With fully featured LUN mapping and LUN masking, the SATABeast Xi can be shared with apple and non-Apple servers, and allows users to easily configure the massive disk capacity for dozens of servers or one.

## ENTERPRISE-CLASS RELIABILITY AND MANAGEMENT

SATABeast Xi offers a richer set of features with redundant controllers, mirrored cache, RAID 6. All individual SATABeast Xi components are fully redundant and hot swappable.

SATABeast Xi's advanced mechanical design provides superior cooling for optimal thermal operation, and reduced drive vibration for improved drive reliability. SATABeast Xi has a full cache coherency design to ensure data integrity even with power loss.

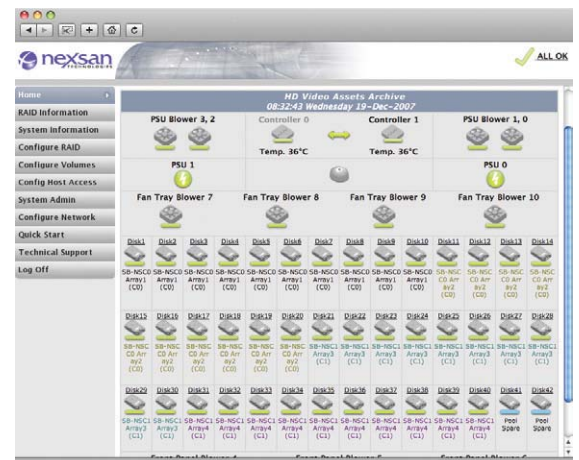
SATABeast Xi's NexScan® management interface is built into the controller, alleviating the need to have a separate server or application manage the storage array. Included are Tele-Guard™, a phone-home feature for user notification, and our WorldView feature enabling multibox management.



555 St. Charles Drive • Suite 202 • Thousand Oaks, CA 91360  
Telephone: 866.4.NEXSAN • 805.418.2700 • Fax: 805.418.2799  
European Office: +44 (0)1332 291 600 • www.nexsan.com

## TECHNICAL SPECIFICATIONS

- Up to 42 SATA drives in 4U high box (29" deep). Easily fits a standard 19" server rack
- Single or dual active/active RAID controllers
- Dual 4Gb Fibre Channel SFP LC host and Dual iSCSI ports per controller
- Auto-negotiating host speed
- Up to 2GB cache per controller
- Supports RAID 0, 1, 1+0, 4, 5, and 6
- Supports multiple RAID sets and multiple volumes per set
- Features LUN security
- Horizontal midplane design promotes superior airflow and alleviates insertion stress points
- Fully scalable with internal capacity expansion
- Embedded web-browsable GUI over 10/100/1000 port, supports email alerts and SNMP traps
- RS-232 Management port
- Hot pluggable drives, controllers, and power supplies
- Supports up to 254 LUNS
- Two redundant 760 watt power supplies with tachometer-monitored blowers to provide maximum power and cooling



More Information  
Contact:

Boost Systems Inc.  
800-347-7621  
916-928-2590  
dave@boostsystems.com  
www.boostsystems.com